

Type G90 Fire resistant gas cylinder cabinets

The fire resistant Maximum safety.

Temperature increase of less than 50 K on the cylinder after 90 minutes according to EN 14470-2.

G90 EN 14470-2
90 minutes
max. 50 k increase of temperature
FIRE CHAMBER TESTED - TYPE PROVED

Indoor storage and provision of pressurised gas cylinders according to EN 14470-2 (G90)

Optimal and maximum fire protection

- Optimum and highest possible fire protection: compliance with the max. temperature increase allowed on the surface of bottle valve bracket of 50 K after 90 minutes according to EN 14470-2
- Extraction air inlet on the top
- Adjusting aids to compensate for uneven floor
- Earthing link (standard)

Construction

- Large interior height (**1858 mm**), easy and convenient installation of gas fittings and pipes

Wing doors

- Door locks in place at 0° (even if the doors are not locked)



1858 mm interior height, easy and efficient installation of gas fittings and pipes.



- 180° max. opening angle, interior of the cabinet completely visible

Pipes

- Up to 72 lead-through points possible for pipes, sensors etc. in the ceiling of the cabinet

Interior equipment

Rolling ramp:

- Rigidly fixed in the cabinet, lightweight
- Convenient and safe use, dampened folding down
- Low rolling edge, high safety when manoeuvring cylinders into the cabinet

Cylinder retainer:

- Across the whole width of the cabinet
- Distance between the cylinders and the rear panel, gives plenty of space for flexible spiral piping

Ventilation

- Complete, uniform ventilation of

- cabinet interior (floor and ceiling)
- Air extraction (120 times air change) with pressure drop below 150 Pa, confirmed by examination

Accessories

- Height adjustable and tilt-resistant shelf (loading capacity 75 kg, evenly distributed load), across the whole cabinet width
- Cylinder retainer, height adjustable for 10 ltr. cylinder types



Cylinder locking (suitable for existing master-key systems).

RAL 1004
RAL 7035



EN



Rolling ramp can be easily hinged down without the need to bend down, easy and safe operation.

Type G90 Fire resistant gas cylinder cabinets - Overview

Safe storage and provision of pressurised gas cylinders according to EN 14470-2 (G90)



Model G90.205.140 Fire resistant gas cylinder cabinet with standard interior equipment (cylinders and gas fittings are not included in supplied items) (page 88)



Model G90.205.60 Fire resistant gas cylinder cabinet with standard interior equipment (cylinders and gas fittings are not included in supplied items) (page 89)



Model G90.205.120 Fire resistant gas cylinder cabinet with standard interior equipment (cylinders and gas fittings are not included in supplied items) (page 88)

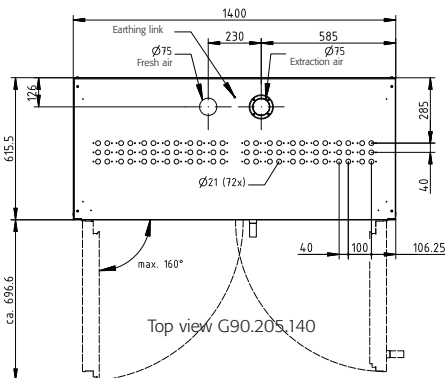


Model G90.205.90 Fire resistant gas cylinder cabinet with standard interior equipment (cylinders and gas fittings are not included in supplied items) (page 89)

Type G90 Fire resistant gas cylinder cabinets

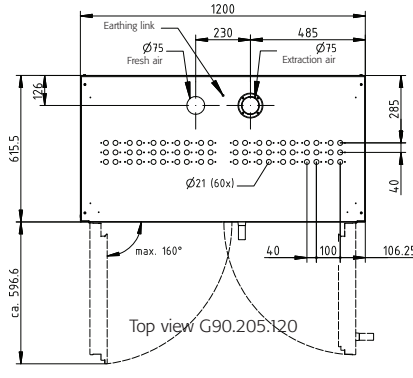


Model G90.205.140 Fire resistant gas cylinder cabinet with standard interior equipment



Extraction air connection

Connection Ø	(mm)	75
Change of air	10 times	m ³ /h 10
Pressure drop	(Pa)	3
Change of air	120 times	m ³ /h 118
Pressure drop	(Pa)	150



Extraction air connection

Connection Ø	(mm)	75
Change of air	10 times	m ³ /h 8,5
Pressure drop	(Pa)	2
Change of air	120 times	m ³ /h 101
Pressure drop	(Pa)	110

Gas cylinder cabinets

- Fire resistance **90 minutes** according to **EN 14470-2 (G90)**
- GS approved
- Labelling according to **EN 14470-2**

G90.205.140

- Cabinet dimensions W x D x H (mm):
exterior: approx. 1400 x 615 x 2050
interior: approx. 1240 x 425 x 1858
- Weight: **approx. 690 kg**

Standard interior equipment

- Rolling ramp made from galvanised, corrugated sheet steel (standard version)
- Adjustable rails to fix manifolds and fittings
- Cylinder retainer with ratched straps for 4 cylinders

Pipes

- Up to 72 lead-through points possible for pipes, sensors etc. in the ceiling of the cabinet

G90.205.120

- Cabinet dimensions W x D x H (mm):
exterior: approx. 1200 x 615 x 2050
interior: approx. 1040 x 425 x 1858
- Weight: **approx. 610 kg**

Standard interior equipment

- Rolling ramp made from galvanised, corrugated sheet steel (standard version)
- Adjustable rails to fix manifolds and fittings
- Cylinder retainer with ratched straps for 4 cylinders

Pipes

- Up to 60 lead-through points possible for pipes, sensors etc. in the ceiling of the cabinet

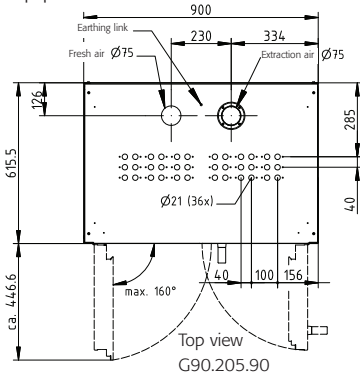
G90 Gas cylinder cabinets

Model	Material, colour	recommended quantity	Order Code
G90.205.140, 2 wing doors, excl. interior equipment	light grey, RAL 7035		17847
G90.205.140-G, 2 wing doors, excl. interior equipment	yellow, RAL 1004		18980
Standard interior equipment	fold-away ramp, mounting rails, cylinder retainer		18567
Comfort interior equipment	fold-away ramp comfort, mounting rails, cylinder retainer	1	19552
G90.205.120, 2 wing doors, excl. interior equipment	light grey, RAL 7035		17578
G90.205.120-G, 2 wing doors, excl. interior equipment	yellow, RAL 1004		18977
Standard interior equipment	fold-away ramp, mounting rails, cylinder retainer		18566
Comfort interior equipment	fold-away ramp comfort, mounting rails, cylinder retainer	1	19556

Type G90 – Fire resistant gas cylinder cabinets



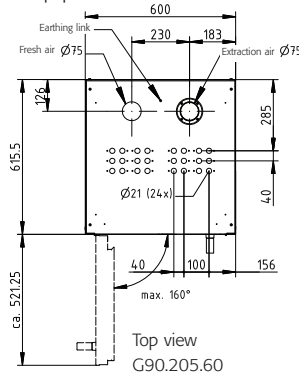
Model G90.205.90 Fire resistant gas cylinder cabinet with standard interior equipment



Extraction air connection

Connection Ø		(mm)	75
Change of air	10 times	m ³ /h	6,5
Pressure drop		(Pa)	2
Change of air	120 times	m ³ /h	76
Pressure drop		(Pa)	63

Model G90.205.60 Fire resistant gas cylinder cabinet with standard interior equipment



Extraction air connection

Connection Ø		(mm)	75
Change of air	10 times	m ³ /h	4
Pressure drop		(Pa)	1
Change of air	120 times	m ³ /h	51
Pressure drop		(Pa)	28

Gas cylinder cabinets

- Fire resistance **90 minutes** according to EN 14470-2 (G90)
- GS approved
- Labelling according to EN 14470-2

G90.205.90

- Cabinet dimensions W x D x H (mm):
exterior: approx. 900 x 615 x 2050
interior: approx. 740 x 425 x 1858
- Weight: **approx. 490 kg**

Standard interior equipment

- Rolling ramp made from galvanised, corrugated sheet steel (standard version)
- Adjustable rails to fix manifolds and fittings
- Cylinder retainer with ratched straps for 3 cylinders

Pipes

- Up to 36 lead-through points possible for pipes, sensors etc. in the ceiling of the cabinet

G90.205.60

- Cabinet dimensions W x D x H (mm):
exterior: approx. 600 x 615 x 2050
interior: approx. 440 x 425 x 1858
- Weight: **approx. 365 kg**

Standard interior equipment

- Rolling ramp made from galvanised, corrugated sheet steel (standard version)
- Adjustable rails to fix manifolds and fittings
- Cylinder retainer with ratched straps for 2 cylinders

Pipes

- Up to 24 lead-through points possible for pipes, sensors etc. in the ceiling of the cabinet

G90 Gas cylinder cabinets

Model	Material, colour	recommended quantity	Order Code
G90.205.90 , 2 wing doors, excl. interior equipment	light grey, RAL 7035		17812
G90.205.90-G , 2 wing doors, excl. interior equipment	yellow, RAL 1004		18974
Standard interior equipment	fold-away ramp, mounting rails, cylinder retainer		18565
Comfort interior equipment	fold-away ramp comfort, mounting rails, cylinder retainer	1	19560
G90.205.60 , 1 wing door, left hand, excl. interior equipment	light grey, RAL 7035		17737
G90.205.60-R , 1 wing door, right hand, excl. interior equipment	light grey, RAL 7035		18966
G90.205.60-G , 1 wing door, left hand, excl. interior equipment	yellow, RAL 1004		18969
G90.205.60-GR , 1 wing door, right hand, excl. interior equipment	yellow, RAL 1004		18971
Standard interior equipment	fold-away ramp, mounting rails, cylinder retainer		18561
Comfort interior equipment	fold-away ramp comfort, mounting rails, cylinder retainer	1	19564

Type G90 Fire resistant gas cylinder cabinets

Comparison of rolling ramps

Version Standard



- Galvanized sheet steel, length 250 mm
- chamfers to prevent slippage of cylinders
- Hand operation of the rolling ramp for
 - hinging down
 - easily lifting and
 - hinging upwithout the need to bend down
- Rolling ramp is flush with the floor of the cabinet, easy and safe pulling/rolling out of gas cylinders

Version Comfort



- Galvanized, corrugated sheet steel, cathodic dip-coated (black), sturdy, scratch and impact resistant
- Corrugated for optimal prevention from slippage of cylinders
- Length 350 mm, flat angle
- Hand operation of the rolling ramp with pneumatic damping for
 - hinging down
 - easily lifting and
 - hinging upwithout the need to bend down
- Rolling ramp is flush with the floor of the cabinet, easy and safe pulling/rolling out of gas cylinders